

Zeldarian Mode

Root Pitch = C

1 2 3 4 5 6 7 8 9 10 11 12 13 14 15 16

Zeldarian Mode

Root Pitch = C#

1 2 3 4 5 6 7 8 9 10 11 12 13 14 15 16

Zeldarian Mode

Root Pitch = D

1 2 3 4 5 6 7 8 9 10 11 12 13 14 15 16

Zeldarian Mode

Root Pitch = D#

1 2 3 4 5 6 7 8 9 10 11 12 13 14 15 16

Zeldarian Mode

Root Pitch = E

1 2 3 4 5 6 7 8 9 10 11 12 13 14 15 16

Zeldarian Mode

Root Pitch = F

1 2 3 4 5 6 7 8 9 10 11 12 13 14 15 16

Zeldarian Mode

Root Pitch = F#

1 2 3 4 5 6 7 8 9 10 11 12 13 14 15 16

Zeldarian Mode

Root Pitch = G

1 2 3 4 5 6 7 8 9 10 11 12 13 14 15 16

Zeldarian Mode

Root Pitch = G#

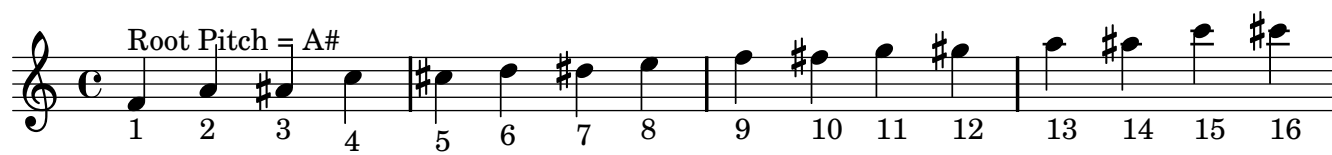
1 2 3 4 5 6 7 8 9 10 11 12 13 14 15 16

Zeldarian Mode

Root Pitch = A

1 2 3 4 5 6 7 8 9 10 11 12 13 14 15 16

Zeldarian Mode



Zeldarian Mode

