

Mixolydian Mode

Root Pitch = C

Mixolydian Mode

Root Pitch = C#

Mixolydian Mode

Root Pitch = D

Mixolydian Mode

Root Pitch = D#

Mixolydian Mode

Root Pitch = E

Mixolydian Mode

Root Pitch = F

Mixolydian Mode

Root Pitch = F#

Mixolydian Mode

Root Pitch = G

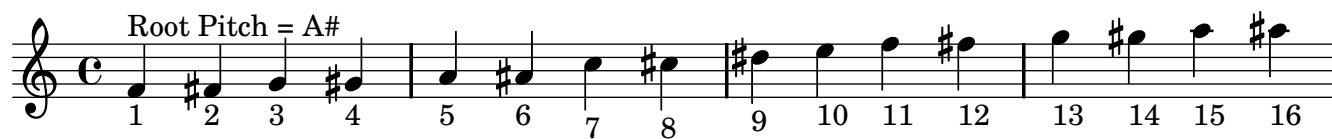
Mixolydian Mode

Root Pitch = G#

Mixolydian Mode

Root Pitch = A

## Mixolydian Mode



## Mixolydian Mode

