

Smule

OCARINA

FOLKSONGS FROM
AROUND THE WORLD

by Debbie Cavalier

CONTENTS

Au Clair De La Lune, France	7
Ode to Joy, Germany	9
Wimoweh (Mbube), Africa	10
When the Saints Go Marching In, USA	11
Amazing Grace, African-American Spiritual.	13
Scarborough Fair, England	15
The Frog in the Bog, Canada	16
Kumbayah, Congo	17
<i>Bonus Section: Leaf Trombone Duets</i>	18



▶ ABOUT THE AUTHOR

Debbie Cavalier is the Dean of Continuing Education at Berklee College of Music and is also an award-winning children's musician with Debbie and Friends.
<http://www.DebbieandFriends.net>.

Layout and design by **Shawn Girsberger**

© 2009 SonicMule, Inc. All Rights Reserved.

WELCOME!

Welcome to Smule's *Folksongs from Around the World* songbook for Ocarina where you will learn to play eight different folk songs in no time. You will also begin to develop a solid foundation in basic music theory along the way.

As stated in the *Smule Holiday Songbook*, the word Ocarina means "little goose" in Italian. It is one of the oldest instruments known to man, dating back 12,000 years. Ocarinas have been made of different materials over the years including wood, clay, bones, metal, plastic, and well, yes ... iPhones!

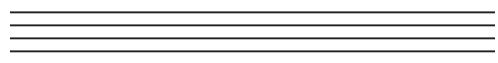
To learn more about the Smule Ocarina App, please visit

<http://ocarina.smule.com>

MUSIC THEORY

Before we dive into playing songs, let's learn a bit about the language of music. Learning music theory will help you to become a better Ocarina player.

Music can be written on a **staff** that contains five lines and four spaces.

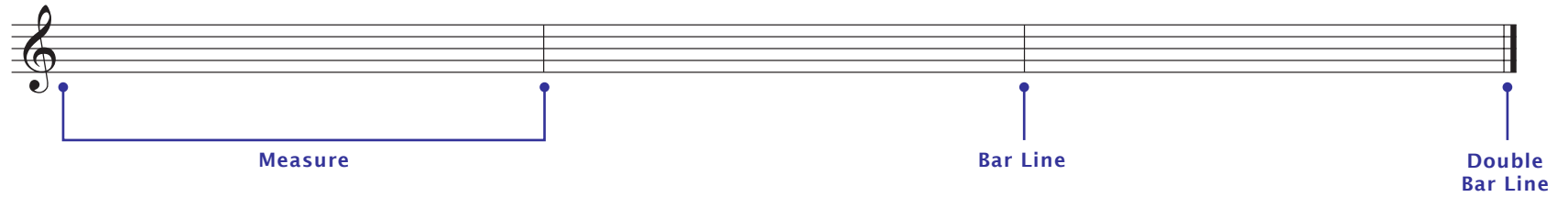


A **clef** indicates where notes appear on a staff. This is a **treble clef**.



MUSIC THEORY

Music notation is divided into **measures** by **bar lines**. A **double bar line** is shown at the end of a song.



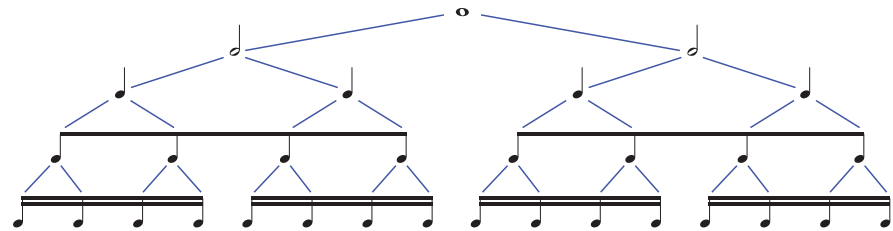
Rhythm notation indicates how long or short to play a note or rest.

One whole note equals two half notes. $\circ = \text{♪} \text{♪}$

One half note equals two quarter notes. $\text{♩} = \text{♪} \text{♪}$

One quarter note equals two eighth notes. $\text{♩} = \text{♪♪}$

One eighth note equals two sixteenth notes. $\text{♩} = \text{♪♪}$



A **time signature** tells you how many beats are in each measure.

4 Means four beats in a measure.

4 Means a quarter note (♩) gets one beat.

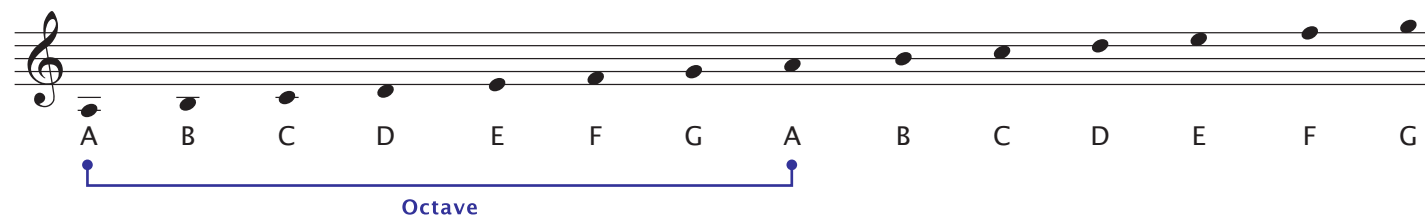
MUSIC THEORY

MUSICAL ALPHABET

Musical notes are based on the first seven letters of the alphabet.

A, B, C, D, E, F, G

Notes appear on the staff in alphabetical order. The first line on a treble staff is E. The notes that extend above and below the treble staff use ledger lines.



Notice the letter names repeat as they move up and down the staff. Each one is an **octave** apart.

OCARINA TAB

In addition to the musical notes and rhythms, this songbook also contains Ocarina fingering diagrams for each note.



PUTTING IT ALL TOGETHER

A musical staff with four notes. Above each note is an ocarina fingering diagram. The notes are: a quarter note on the first line (A), a quarter note on the second line (B), a quarter note on the second space (C), and a quarter note on the first space (G). Below the staff are the lyrics: "once", "was", "lost", "but".

Fingering Diagram	Lyrics
 11	once
 8	was
 6	lost
 1	but



The notes G, A, and B, are used in your first song. Practice the notes as shown below and you'll be ready to play "Au Clair De La Lune."

NEW NOTES G, A, B

G



A

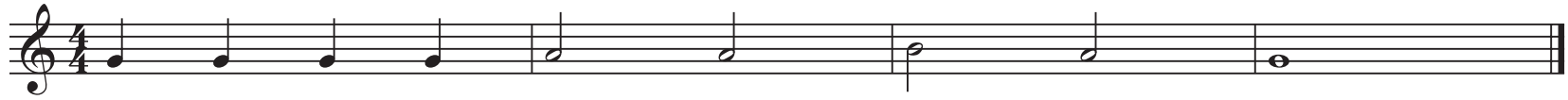
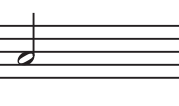


B



TIP Be sure to set the "mode" on your Smule Ocarina for each song and practice example. Modes are listed in the upper right-hand corner of each song and practice page as shown above.

NOTE PRACTICE



AU CLAIR DE LA LUNE

FRANCE



Two staves of musical notation in 4/4 time. The first staff begins with a treble clef and a 4/4 time signature. The melody consists of quarter notes: G4, A4, B4, C5, B4, A4, G4, F4, E4, D4, C4. Above the notes are fret diagrams for guitar: 6, 7, 8, 7, 6, 8, 7, 6. The second staff is identical to the first.



Now, let's add the notes C and D to your repertoire. This makes a total of five notes learned and opens a world of songs to you!

NEW NOTES C AND D

C



D



NOTE PRACTICE

The following example is provided to help you practice all five notes learned so far: G, A, B, C and D.

A musical staff in 4/4 time with a treble clef. The notes are: G4 (quarter), A4 (quarter), B4 (quarter), C5 (quarter), D5 (quarter), C5 (quarter), B4 (quarter), A4 (quarter), G4 (half). Above the staff are fingerboard diagrams for each note: G (11), A (8), B (9), C (7), D (6), C (7), B (8), A (7), G (6).

Note	Fingerboard Diagram
G	11
A	8
B	9
C	7
D	6
C	7
B	8
A	7
G	6

ODE TO JOY

GERMANY



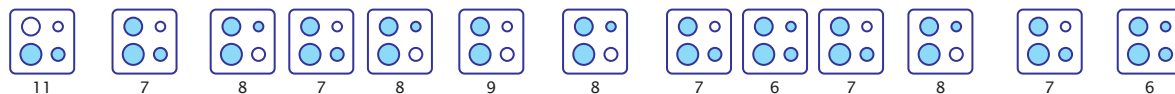
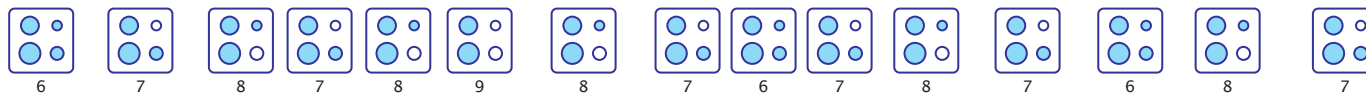
The image shows two staves of music for the "Ode to Joy" melody in G Ionian mode. The first staff begins with a treble clef and a 4/4 time signature. The melody consists of quarter notes: G4, A4, B4, C5, B4, A4, G4, F4, E4, D4, C4, B3, A3, G3. Above the notes are fret diagrams for guitar, each in a square box with four circles representing strings and a number below it. The fret numbers for the first staff are: 8, 9, 11, 9, 8, 7, 6, 7, 8, 7. The second staff continues the melody with the same sequence of notes: G3, A3, B3, C4, B3, A3, G3, F3, E3, D3, C3, B2, A2, G2. The fret diagrams for the second staff are: 8, 9, 11, 9, 8, 7, 6, 7, 8, 7, 6.

QUARTER-NOTE TRIPLET
 Play all three notes as two beats.



WIMOWEH (MBUBE)

AFRICA



MORE MUSIC THEORY

PICK UP A pick-up measure can be found at the beginning of a song. It contains fewer beats than the rest of the measures in the song.



Pickup measure: 3 beats

TIE A tie connects two of the same notes together to be played as one.



WHEN THE SAINTS GO MARCHING IN USA



6 8 9 11 6 8 9 11 6 8 9

Oh, when the Saints _____ go march - ing in, _____ Oh when the

11 8 6 8 7 8 7 6 8 11

Saints go march - ing in. _____ Yes, we'll all get up and

11 9 8 9 11 8 6 7 6

join them, _____ when the Saints go march - ing in. _____

See special bonus section for the Smule Leaf Trombone on page 19.



To prepare for the next song, your new notes are D and E. Notice this new note D is an octave lower than the D note you learned for "Wimoweh."

NEW NOTES D AND E

D



1



E



3



NOTE PRACTICE



1



6



3



7



8



6



7



1



6



MORE MUSIC THEORY

3/4 TIME SIGNATURE Some songs move in beat patterns of three. This kind of beat pattern is known as a **waltz**.

Count: 1 2 3 1 2 3 1 2 3

DOTTED RHYTHMS A dot placed after a note adds one half the value of the note. A dotted-half note equals three beats.

$\text{♩.} = 3 \text{ beats } (2 + 1)$



AMAZING GRACE AFRICAN-AMERICAN SPIRITUAL

Musical score for 'Amazing Grace' in 3/4 time, featuring fingerings and lyrics.

Line 1: A - - - - maz - ing grace how sweet the sound that

Line 2: saved a wretch like me. _____ I

Line 3: once was lost but now am found was

Line 4: blind but now I see. _____

Fingerings (circles with numbers) are provided above each note. A dotted-half note is shown as a half note with a dot.



To prepare for the next song, your new notes are middle C and F. Don't forget to set your Ocarina's mode to D Dorian.

NEW NOTES C AND F

C



4



F



8



NOTE PRACTICE



6



11



9



8



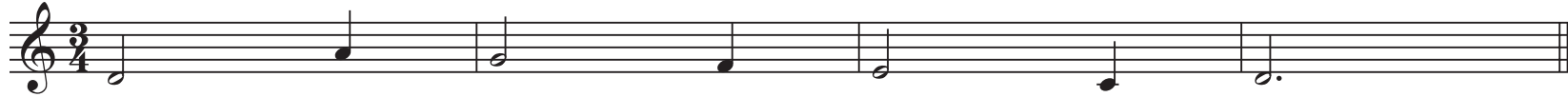
7



4



6



DOTTED-QUARTER NOTE Remember, a dot placed after a note adds one half the value of the note. A dotted-quarter note equals one and a half beats.

♩. = 1½ beats

SCARBOROUGH FAIR

ENGLAND



6 11 7 8 7 6

Are you goin' to Scar - bor-ough Fair? _____

11 14 16 14 11 13 9 11

Pars - ley, sage, rose - mar - y and thyme. _____ Re -

16 16 14 11 9 8 9 8 7 4

mem - ber me to one who lives there, _____ For

6 11 9 8 7 6 4 6

once she was a true love of mine. _____

2/4 TIME SIGNATURE The next song moves in beat patterns of two each measure.

Count: 1 2 1 2 1 2 1 2

KEY SIGNATURES When a sharp or flat symbol is at the beginning of a piece, the note it represents is played as a flat or a sharp.



EIGHTH-NOTE TRIPLET

Play all three notes over one beat.



THE FROG IN THE BOG

CANADA

1 6 7 8 9 11

There once was a frog who lived in a bog and played a

9 8 7 6

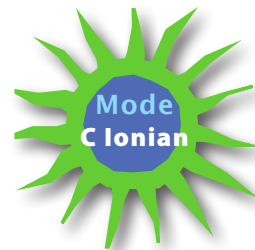
fid - dle in the mid - dle of a pud - dle. What a mud - dle!

1 6 1 6

Bet - ter go 'round. Bet - ter go 'round.

KUMBAYAH

CONGO



Musical score for 'Kumbayah' in 4/4 time, featuring guitar chord diagrams and lyrics.

Line 1: Chords: 6, 8, 11, 13, 11, 6, 8, 11. Lyrics: Kum - ba - ya, my Lord, kum - ba - ya, Kum - ba - ya, my

Line 2: Chords: 9, 8, 7, 6, 8, 11, 13. Lyrics: Lord, kum - ba - ya, Kum - ba - ya, my Lord, kum - ba -

Line 3: Chords: 11, 9, 8, 6, 7, 6. Lyrics: ya, _____ Oh, Lord, _____ kum - ba - ya.

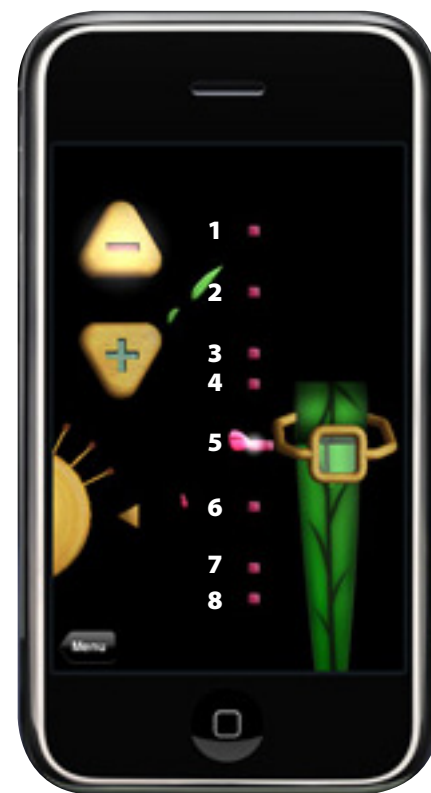
BONUS SECTION

LEAF TROMBONE DUETS

As a special treat, we've added duet parts for the Smule Leaf Trombone App to be played along with two of the Ocarina songs you learned in this book: "When the Saints Go Marching In" and "Ode to Joy."

The Leaf Trombone music notation for this book contains numbers indicating the correct holes to cover. Experiment with the - and + controls to change the octave of the notes you play.

For more information about the Smule Leaf Trombone, please visit <http://leaftrombone.smule.com/?ab=11>



WHEN THE SAINTS GO MARCHING IN

LEAF TROMBONE



The following shows the Ocarina and the Leaf Trombone parts aligned. To play the Leaf Trombone part, follow the top line of each staff system. For the Ocarina fingerings, go to page 11.

Leaf Trombone

Ocarina

Oh, when the Saints go march-ing in, Oh when the

Saints go march - ing in. Yes, we'll all get up and

join them, when the Saints go march - ing in.

8 6 5 8 6 5

1 5 3 5 1 5

4 1 5 8 5 1

CERTIFICATE OF ACCOMPLISHMENT

This certifies that

has completed the
Smule

OCARINA

Folksongs from Around the World Songbook

Debbie Cavalier, Author

Date

